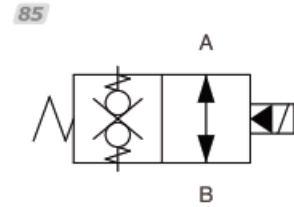
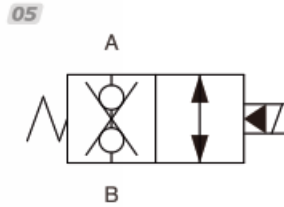


# V3070



## Graphic Symbol

## 繪圖符號



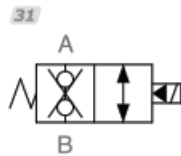
## Ordering Code

型號說明 **V3070** <sup>1</sup> @ <sup>2</sup> # <sup>3</sup> \* <sup>4</sup> **D24** <sup>5</sup> **DL** <sup>6</sup> **35** <sup>7</sup>

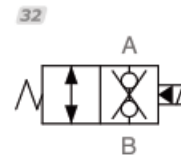
### 1 Cartridge solenoid check valve 插入式電磁止回閥

V3070(10W-2) 二口二位 Poppet 2-way

### 2 Operation 油路方向功能選項 (註:V6070以上規格 不用附濾網)



常閉雙止回(雙向封閉)



常開雙止回(雙向自由流)

### 3 Option: with manual 附手動輔助裝置選項

P: Push-style Manual Override  
P: 推(向外推移式)

M: Screw-out Konb Style

M: 旋鈕式(開) 逆時鐘方向 ↺

T: Push and Twist Style

T: 推桿附扭轉

N: Option

N: 標準(輔助裝置不可調)

Screw-in Konb Style

旋鈕式(關) 順時鐘方向 ↻

Manual Override

固定輔助裝置

### 4 Operation 型式

05 大流量  
標準關閉型

85 大流量  
快速關閉型

### 5 Coil type 線圈形式

D12: DC12V D24: DC24V A24: AC24V A11: AC110V  
A22: AC220V A38: AC380V RA 110V RA220V(50/60 HZ)

### 6 Terminations 接線方式

DG: DIN43650 DL: Lead wires(2)  
插頭式 出線2條式

### 7 Max pressure 最高壓力

35: 350bar(5145psi)

# CARTRIDGE SOLENOID CHECK VALVE 插入式電磁止回閥

## V3070

### Technical Data

### 技術參數

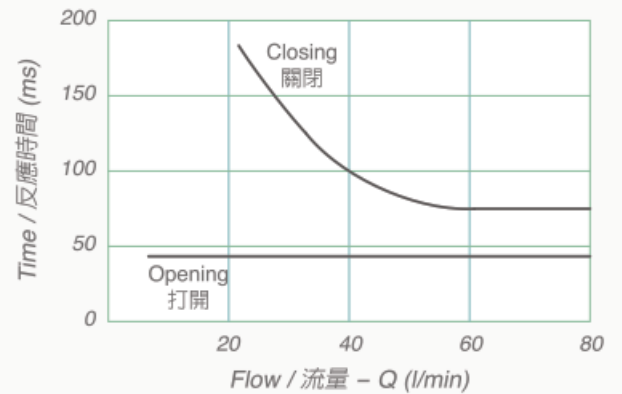
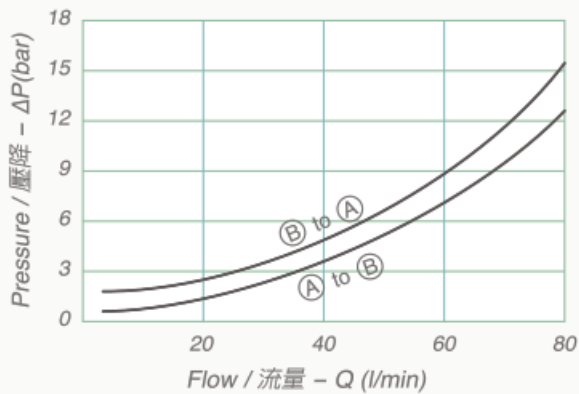
Max. Operating pressure 最高壓力	Rated flow 額定流量	Cavity-Tooling 成型孔	Installation torque 安裝扭矩	Weight 重量
bar(psi)	(l/min)		(Nm)	(kg)
350(5145)	70	10W-2	44-56	0.16

Fluids-Temperatures 使用油溫範圍	Internal Leakage 最大內漏量	Filtration 過濾精度	Minimun Voltage Required 線圈需要的最低電壓
(°C)	0.15cc/minute	(um)	
-40 ~ 120°C	(3 drops/minute)max. at 350 bar (3滴/每分)壓降350bar時	25	90% of nominal 額定電壓的90%

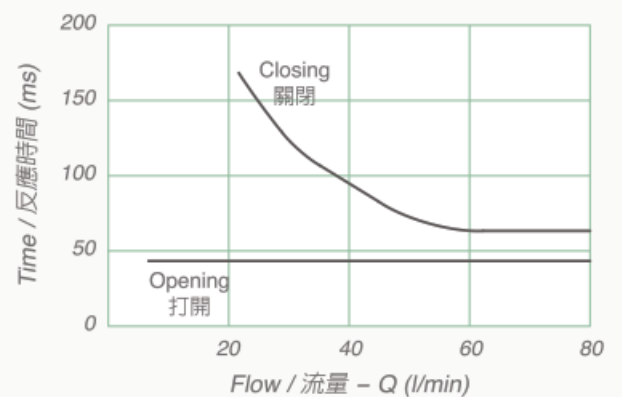
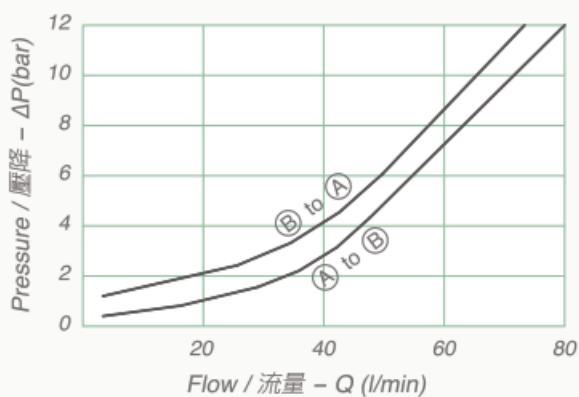
### Specifications

### 技術數據

(31常閉 雙止回型)



(32常開 雙止回型)

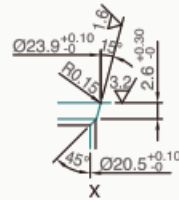
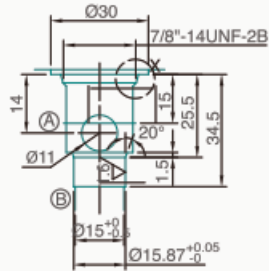


### Cavity-Tooling

### 成型孔

Millimeters(m/m)

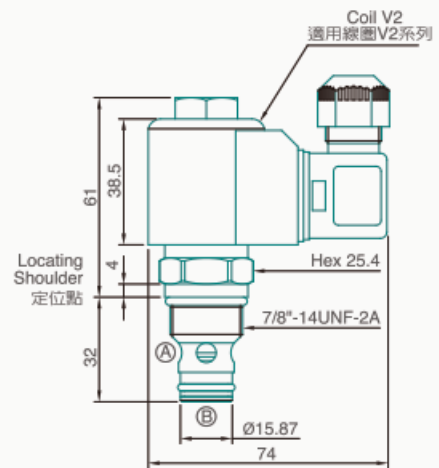
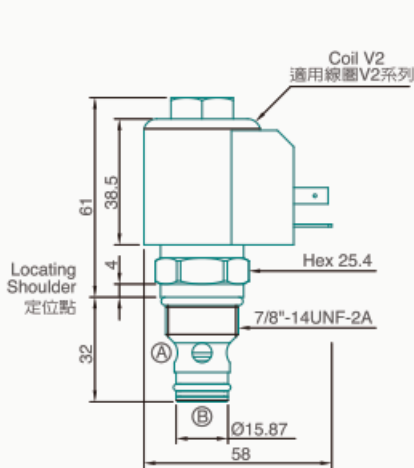
	0.03
	0.02



### Dimension

### N 外型尺寸圖

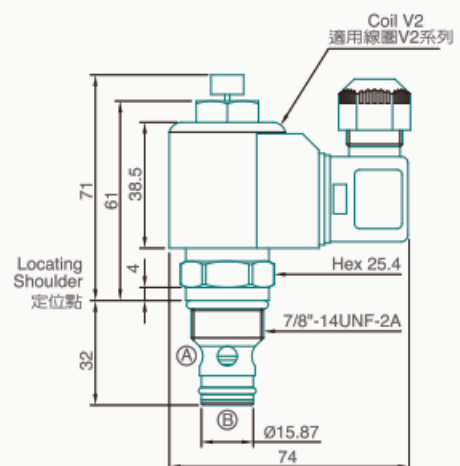
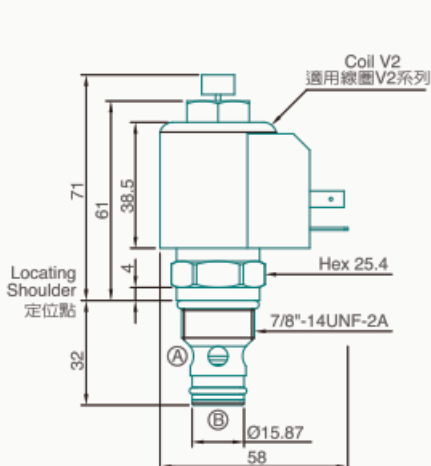
Millimeters(m/m)



### Dimension

### P 外型尺寸圖

Millimeters(m/m)



# CARTRIDGE SOLENOID CHECK VALVE

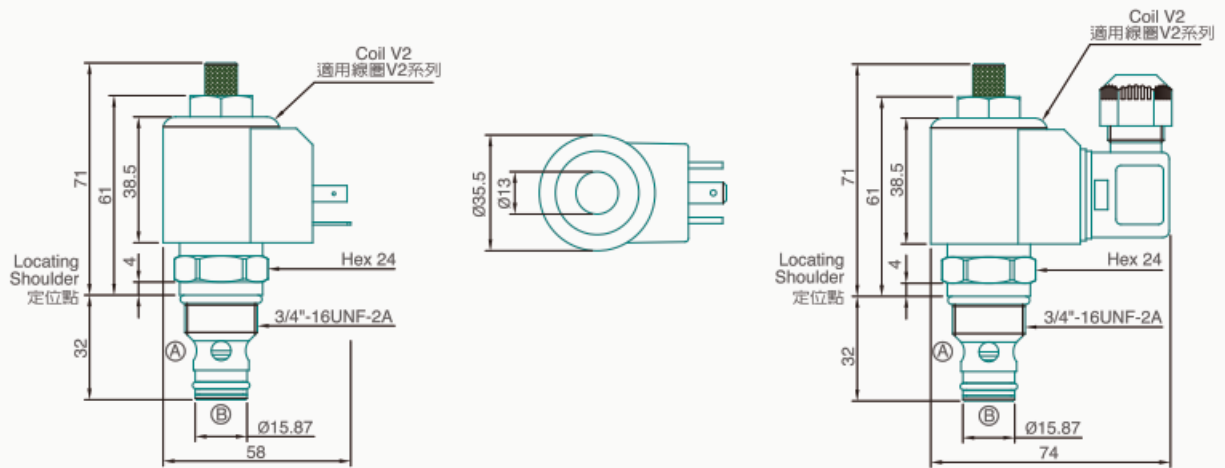
## 插入式電磁止回閥

# V3070

### Dimension

### M 外型尺寸圖

Millimeters(m/m)



### Dimension

### T 外型尺寸圖

Millimeters(m/m)

