

CARTRIDGE SOLENOID CHECK VALVE 插入式電磁止回閥

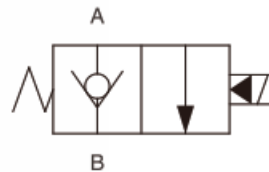
V2086



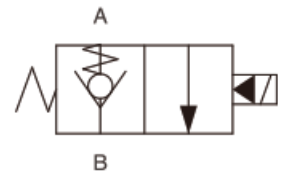
Graphic Symbol

繪圖符號

05



85



Ordering Code

型號說明

V2086

1

@

2

#

3

*

4

D24

5

DL

6

35

7

1

Cartridge solenoid check valve
插入式電磁止回閥

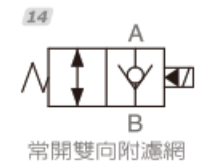
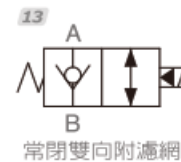
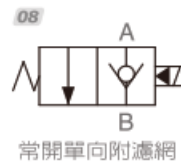
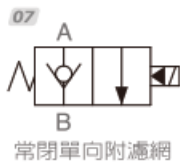
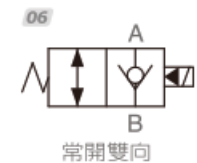
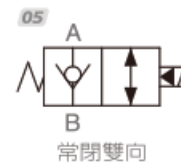
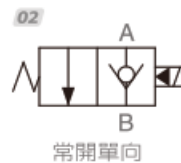
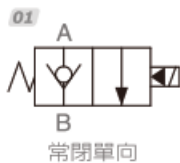
V2086(19E-2)

二口二位

Poppet 2-way

2

Operation
油路方向功能選項



3

Option:
附手動輔助裝置選項

P: Push-style Manual Override
P: 推(向外推移式)

N: Option
N: 標準(輔助裝置不可調)

M: Screw-out Konb Style
M: 旋鈕式(開) 逆時鐘方向 ↺

Screw-in Konb Style
旋鈕式(關) 順時鐘方向 ↻

T: Push and Twist Style
T: 推桿附扭轉

Manual Override
固定輔助裝置

4

Operation
型式

05 大流量
標準關閉型

85 大流量
快速關閉型

5

Coil type
線圈形式

D12: DC12V D24: DC24V A24: AC24V A11: AC110V
A22: AC220V A38: AC380V RA 110V RA220V(50/60 HZ)

6

Terminations
接線方式

DG: DIN43650 DL: Lead wires(2)
插頭式 出線2條式

7

Max pressure
最高壓力

35: 350bar(5145psi)

Technical Data

技術參數

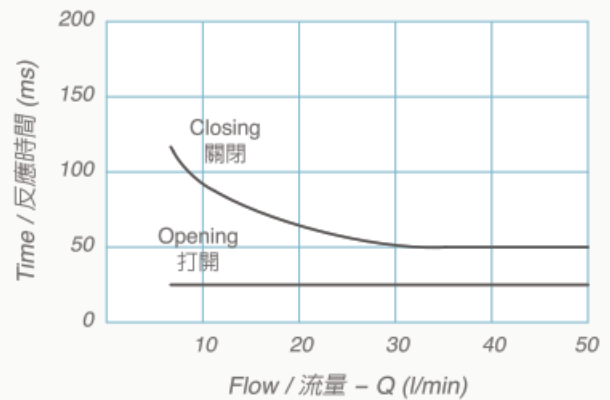
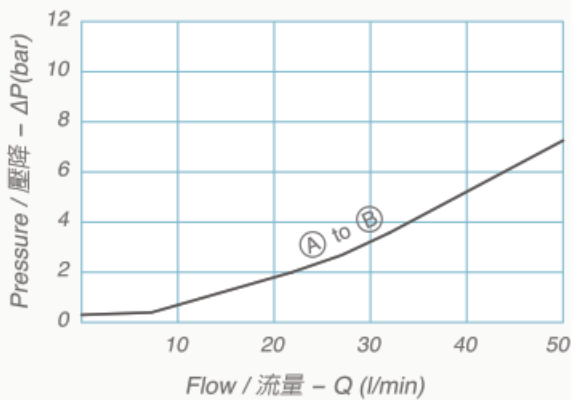
Max. Operating pressure 最高壓力	Rated flow 額定流量	Cavity-Tooling 成型孔	Installation torque 安裝扭矩	Weight 重量
bar(psi)	(l/min)		(Nm)	(kg)
350	40	19E-2	39-51	0.13

Fluids-Temperatures 使用油溫範圍	Internal Leakage 最大內漏量	Filtration 過濾精度	Minimun Voltage Required 線圈需要的最低電壓
(°C)	0.15cc/minute	(um)	
-40 ~ 120°C	(3 drops/minute)max. at 350 bar (3滴/每分)壓降350bar時	25	90% of nominal 額定電壓的90%

Specifications

技術數據

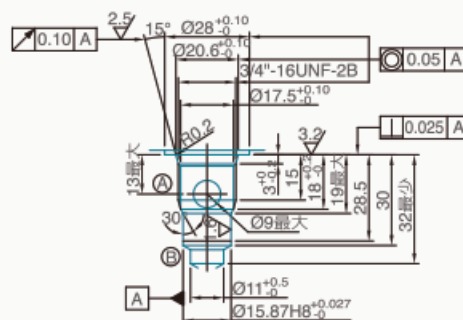
(05標準型)



Cavity-Tooling

成型孔

Millimeters(m/m)

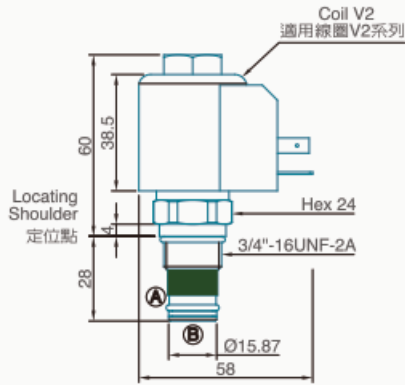


CARTRIDGE SOLENOID CHECK VALVE 插入式電磁止回閥

V2086

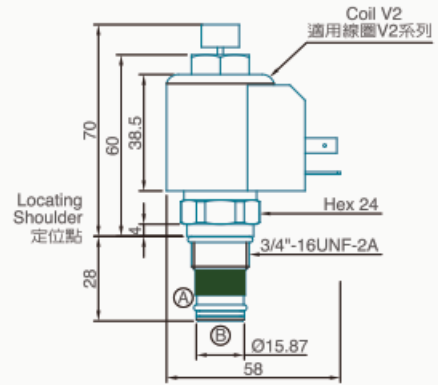
Dimension

N 外型尺寸圖 Millimeters(m/m)



Dimension

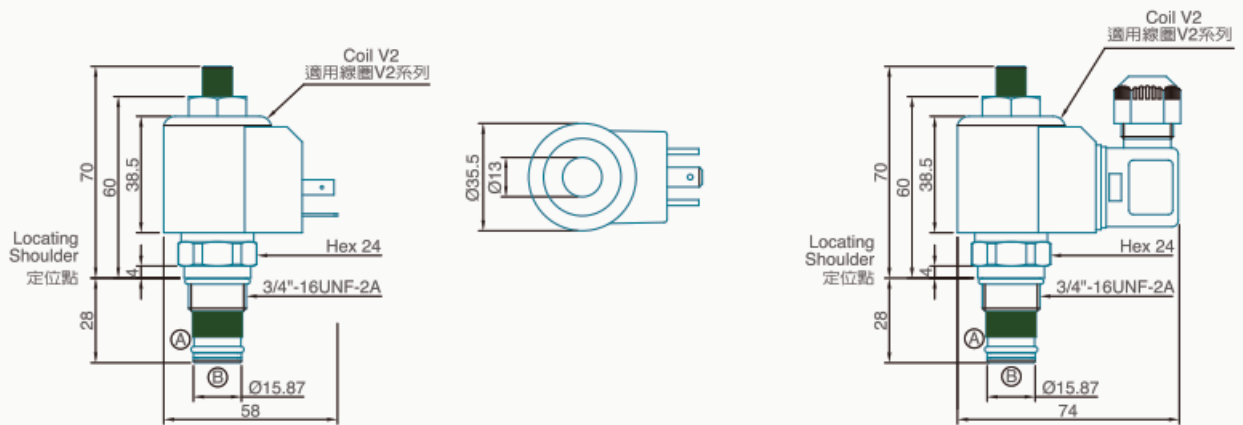
P 外型尺寸圖 Millimeters(m/m)



Dimension

M 外型尺寸圖

Millimeters(m/m)



Dimension

T 外型尺寸圖

Millimeters(m/m)

