

# CARTRIDGE SOLENOID CHECK VALVE

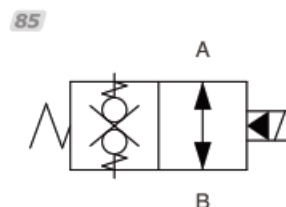
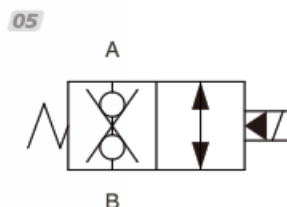
## 插入式電磁止回閥

### V2070



#### Graphic Symbol

繪圖符號



#### Ordering Code

型號說明

V2070 1 @ 2 # 3 \* 4 D24 5 DL 6 35 7

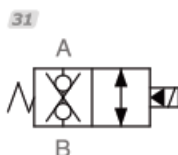
1

**Cartridge solenoid check valve**  
插入式電磁止回閥

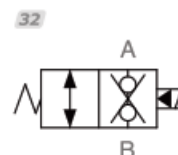
V2070(08W-2) 二口二位 Poppet 2-way

2

**Operation**  
油路方向功能選項  
(註: V6070以上規格  
不用附濾網)



常閉雙止回(雙向封閉)



常開雙止回(雙向自由流)

3

**Option: with manual**  
附手動輔助裝置選項

P: Push-style Manual Override  
P: 推(向外推移式)

N: Option  
N: 標準(輔助裝置不可調)

M: Screw-out Konb Style  
M: 旋鈕式(開) 逆時鐘方向 ↺

Screw-in Konb Style  
旋鈕式(關) 順時鐘方向 ↻

T: Push and Twist Style  
T: 推桿附扭轉

Manual Override  
固定輔助裝置

4

**Operation**  
型式

05 大流量  
標準關閉型

85 大流量  
快速關閉型

5

**Coil type**  
線圈形式

D12: DC12V D24: DC24V A24: AC24V A11: AC110V  
A22: AC220V A38: AC380V RA 110V RA220V(50/60 HZ)

6

**Terminations**  
接線方式

DG: DIN43650 DL: Lead wires(2)  
插頭式 出線2條式

7

**Max pressure**  
最高壓力

35: 350bar(5145psi)

### Technical Data

### 技術參數

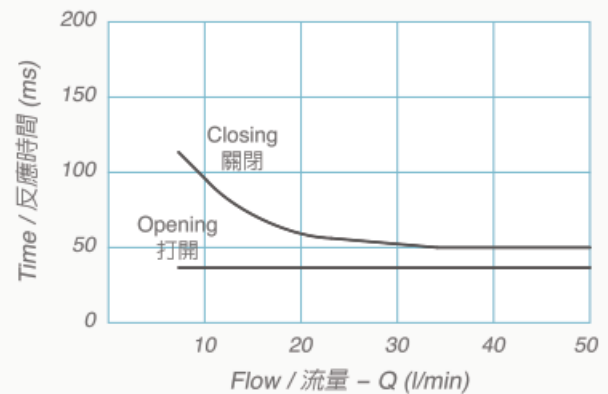
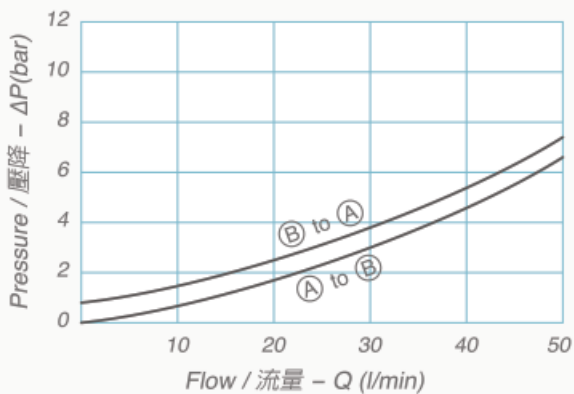
Max. Operating pressure 最高壓力	Rated flow 額定流量	Cavity-Tooling 成型孔	Installation torque 安裝扭矩	Weight 重量
bar(psi)	(l/min)		(Nm)	(kg)
350(5145)	40	08W-2	39-51	0.13

Fluids-Temperatures 使用油溫範圍	Internal Leakage 最大內漏量	Filtration 過濾精度	Minimum Voltage Required 線圈需要的最低電壓
(°C)	0.15cc/minute	(um)	
-40 ~ 120°C	(3 drops/minute)max. at 350 bar (3滴/每分)壓降350bar時	25	90% of nominal 額定電壓的90%

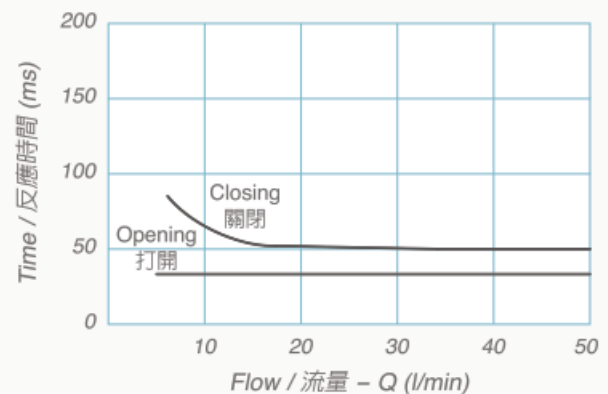
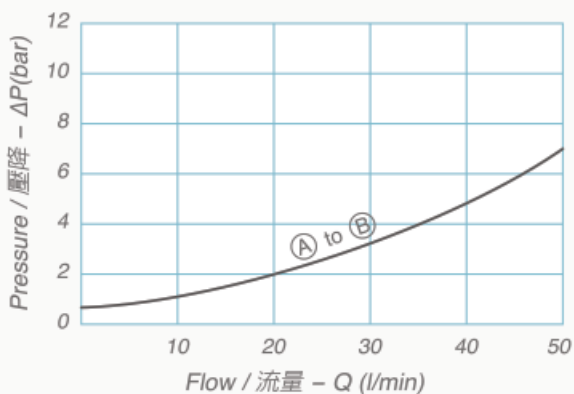
### Specifications

### 技術數據

(31常閉 雙止回型)



(32常開 雙止回型)



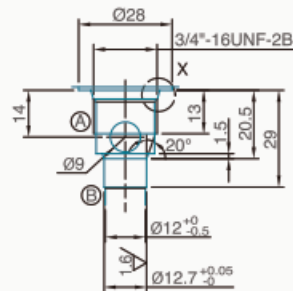
# CARTRIDGE SOLENOID CHECK VALVE 插入式電磁止回閥

## V2070

### Cavity-Tooling

### 成型孔

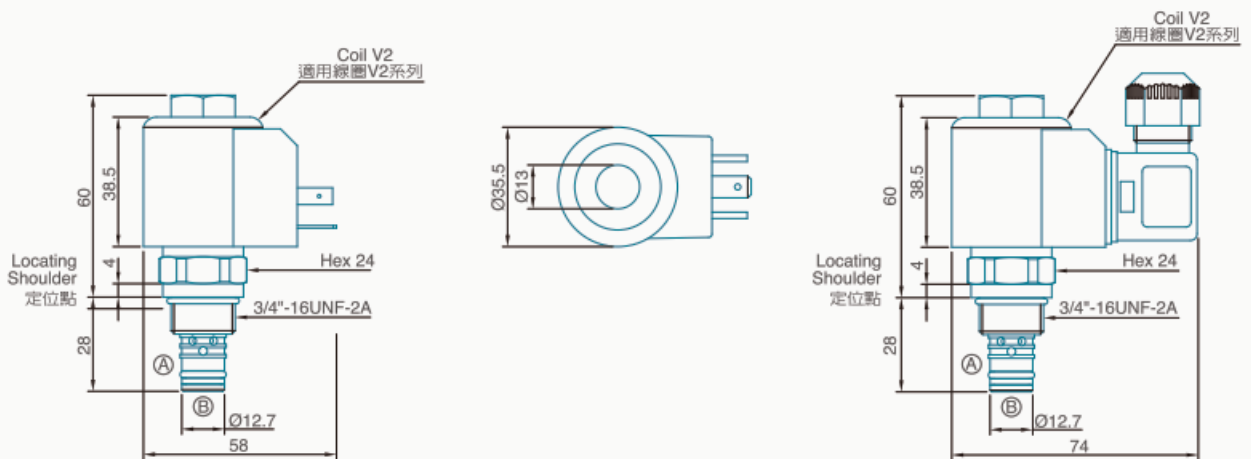
Millimeters(m/m)



### Dimension

### N 外型尺寸圖

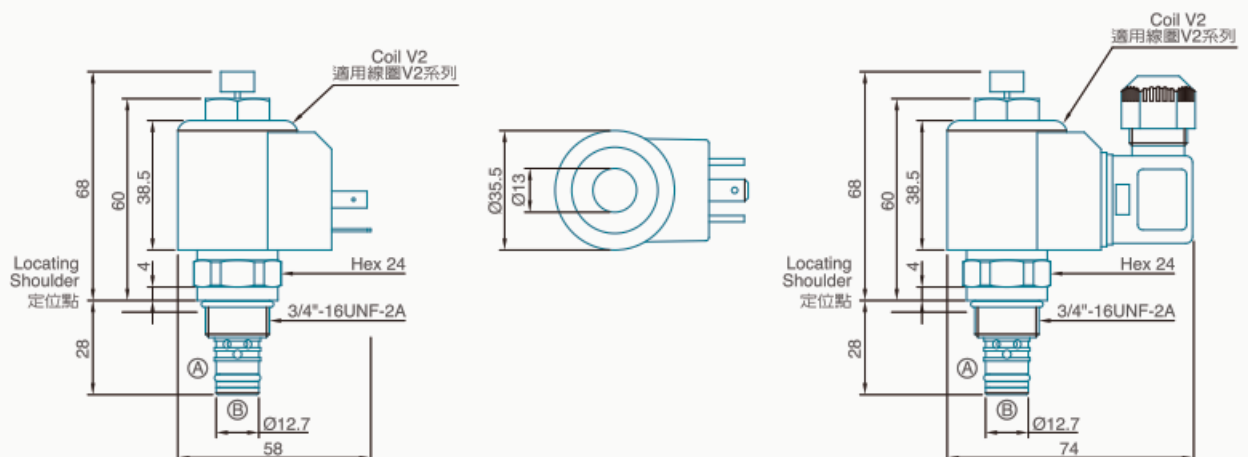
Millimeters(m/m)



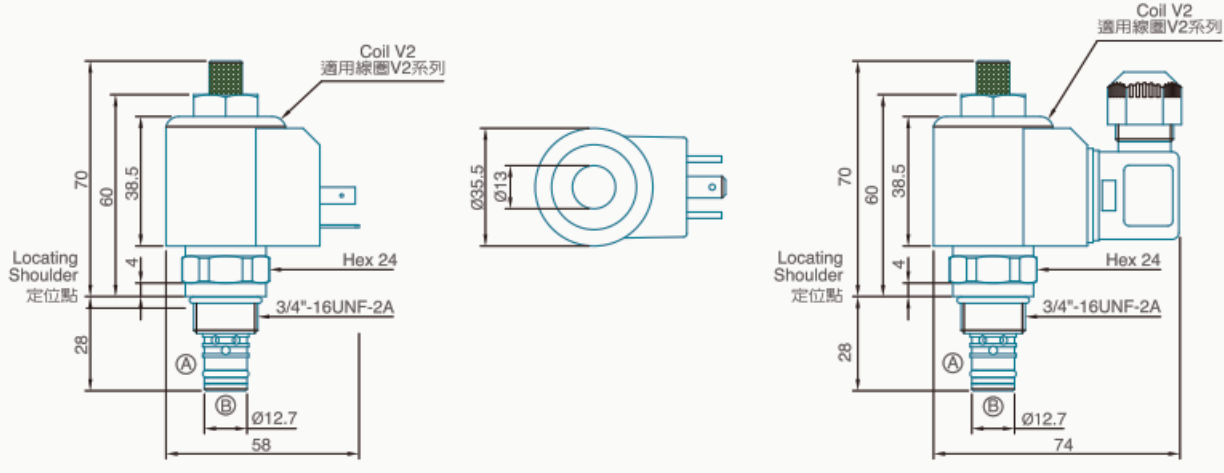
### Dimension

### P 外型尺寸圖

Millimeters(m/m)



**Dimension**      **M 外型尺寸圖**      Millimeters(m/m)



**Dimension**      **T 外型尺寸圖**      Millimeters(m/m)

