

PILOT OPERATED RELIEF CARTRIDGE WITH VENT
浮動型-插式透氣型溢流閥 (導壓操作平衡活塞型)



RV2A-T11A
RV3A-T2A

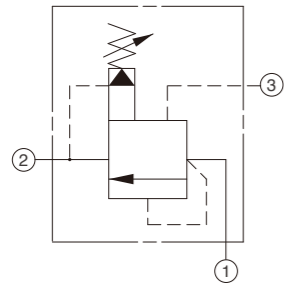
Specifications

技術數據

	Max. pressure 最高壓力 (bar)	Max. flow 最大流量 Litres/min	Max. flow 安裝扭矩 (Nm)	Operating temperature 溫度範圍 -35~100°C (-31~212°F)	kg 重量 (lbs)
RV2A	350	60 L/min	40/50	-35~100°C (-31~212°F)	0.17 (0.37)
RV3A	350	120 L/min	60/70	-35~100°C (-31~212°F)	0.30 (2.18)

Pilot Operated Relief Cartridge With Vent

浮動型-插式透氣型溢流閥 (導壓操作平衡活塞型)



Model code 產品型號	Cavity 閥孔型號	Capacity 流量	Cartridge Dimensions 外型尺寸	
			a	
			L	K
RV2A	T11A	30L/min	64	70
RV3A	T2A	120L/min	72	78
RV6A	T17A	240L/min	84	90
RV8A	T19A	480L/min	100	107

Ordering Code

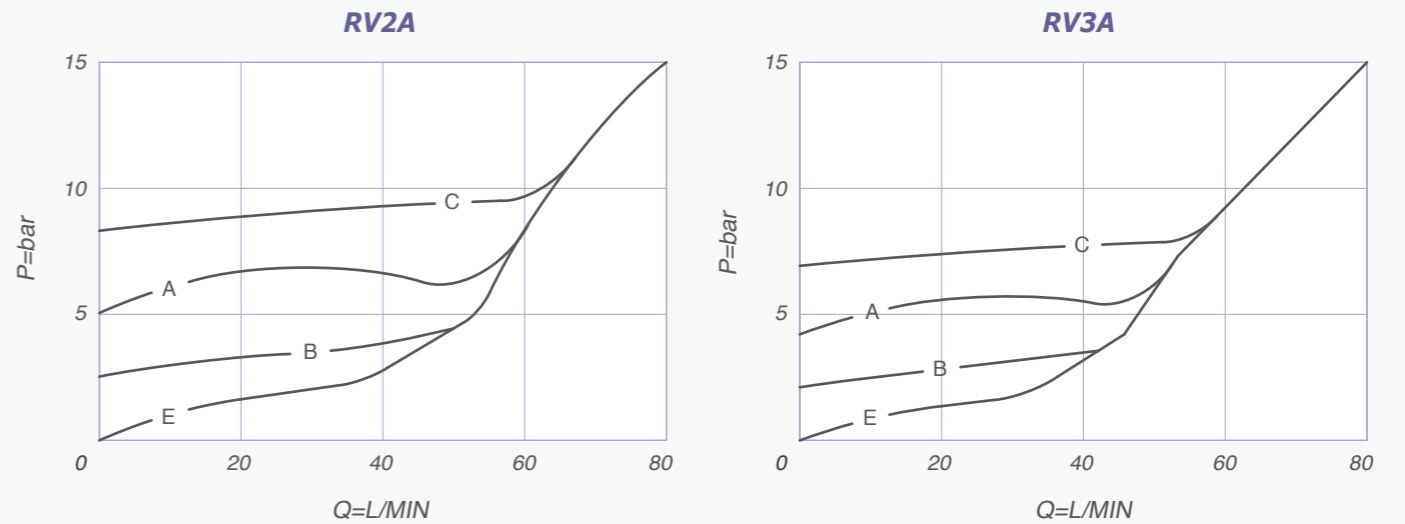
型號說明

RV **1** **2A** **T11A** **L** **A** **N**
3A 2 T2A 3 4 5 6

- 1 Model Code**
插式透氣型溢流閥
- 2 Specification**
規格
2, 3, 6, 8
- 3 Cavity**
閥孔型號
T11A, T2A, T17A, T19A
- 4 Controls**
控制方式
L: 標準螺絲調整 K: 調鈕調整
L: Standard Screw Adjustment K: Handknob with Lock knob
- 5 Adjustment Ranges**
調整範圍
A: 7~210bar, B: 3.5~105bar, C: 10~400bar, E: 2~25bar
- 6 Seals**
油封材質
N: Buna-N V: Viton

Vented Pressure Drop

透氣壓降曲線



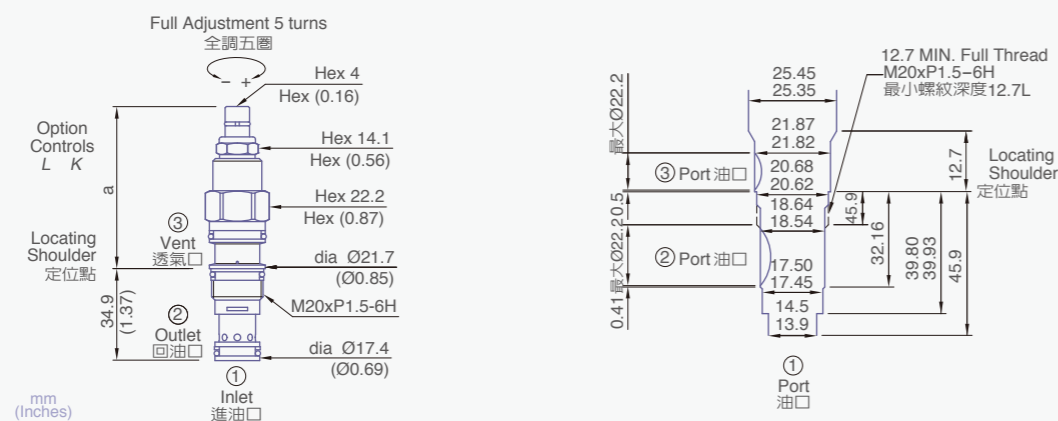
Dimension

外型尺寸

RV2A

Cavities Tooling

浮動型插式3口閥孔尺寸圖



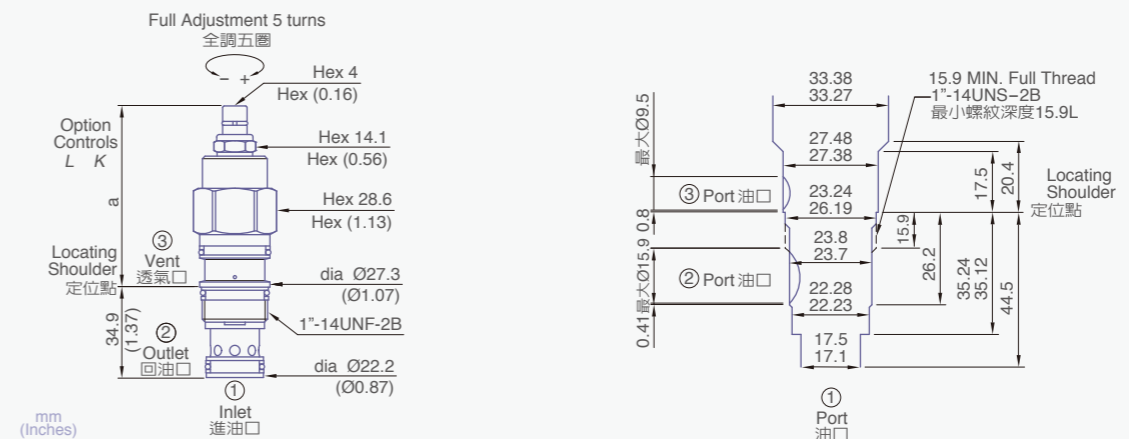
Dimension

外型尺寸

RV3A

Cavities Tooling

浮動型插式3口閥孔尺寸圖



PILOT OPERATED RELIEF CARTRIDGE WITH VENT
浮動型-插式透氣型溢流閥 (導壓操作平衡活塞型)



RV6A-T17A
RV8A-T19A

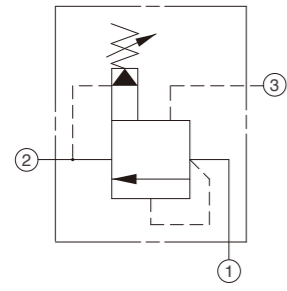
Specifications

技術數據

	Max. pressure 最高壓力 (bar)	Max. flow 最大流量 Litres/min	Max. flow 安裝扭矩 (Nm)	Operating temperature 溫度範圍	kg 重量 (lbs)
RV6A	350	240 L/min	200/215	-35~100°C (-31~212°F)	0.48 (1.4)
RV8A	350	480 L/min	465/500	-35~100°C (-31~212°F)	1.43 (3.15)

Pilot Operated Relief Cartridge With Vent

浮動型-插式透氣型溢流閥 (導壓操作平衡活塞型)



Model code 產品型號	Cavity 閥孔型號	Capacity 流量	Cartridge Dimensions 外型尺寸	
			a	
			L	K
RV2A	T11A	95L/min	64	70
RV3A	T2A	200L/min	72	78
RV6A	T17A	380L/min	84	90
RV8A	T19A	760L/min	100	107

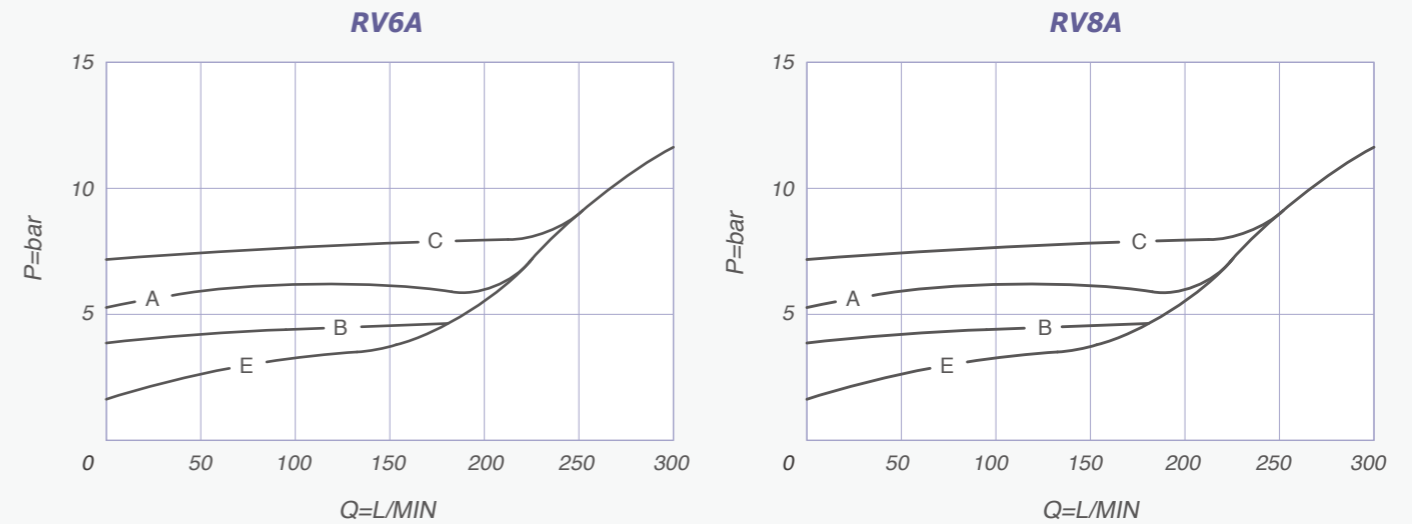
Ordering Code

型號說明 RV **1** 6A **2** T17A **3** L **4** A **5** N **6**

- Model Code**
插式透氣型溢流閥
- Specification**
規格
2, 3, 6, 8
- Cavity**
閥孔型號
T11A, T2A, T17A, T19A
- Controls**
控制方式
L: 標準螺絲調整 K: 調鈕調整
L: Standard Screw Adjustment K: Handknob with Lock knob
- Adjustment Ranges**
調整範圍
A: 7~210bar, B: 3.5~105bar, C: 10~400bar, E: 2~25bar
- Seals**
油封材質
N: Buna-N V: Viton

Vented Pressure Drop

透氣洩壓曲線



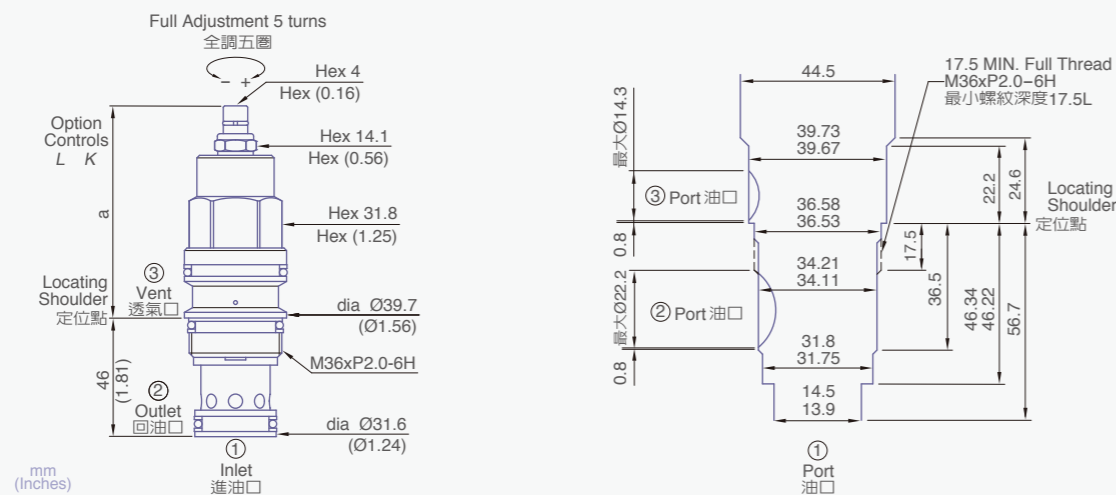
Dimension

外型尺寸

RV6A

Cavities Tooling

浮動型插式3口閥孔尺寸圖



Dimension

外型尺寸

RV8A

Cavities Tooling

浮動型插式3口閥孔尺寸圖

