

ADJUSTABLE PRESSURE-COMPENSATION FLOW CONTROL (WITH FREE FLOW CHECK)

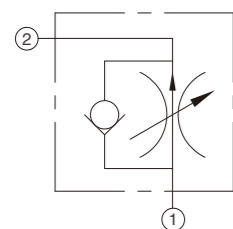
浮動型-插式全調型壓力補償調流閥 (附單向閥)



FD2A-T13A
FD3B-T5A

Adjustable Pressure - Compensation Control (With Free Flow Check)

浮動型-插式全調型壓力補償調流閥 (附單向閥)



Model code 產品型號	Cavity 閥孔型號	Capacity 流量	Cartridge Dimensions 外型尺寸		
			L	H	K
FD2A	T13A	23L/min	58	64	64
FD3B	T5A	45L/min	67	72	73
FD6A	T16A	95L/min	73	79	79
FD8A	T18A	200L/min	84	90	90

Ordering Code

型號說明 **FD** **1** **2A** **3A** **T13A** **T5A** **L** **A** **N** **6**

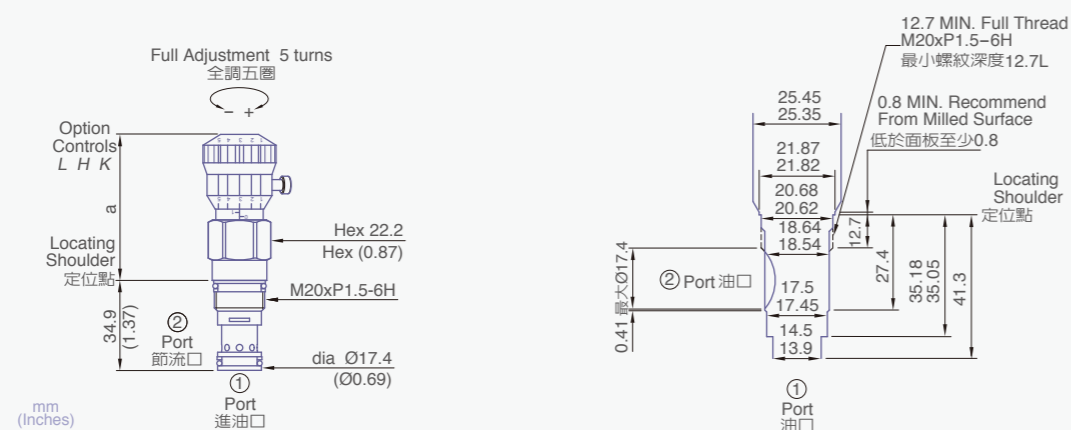
- Model Code**
插式全調型節流閥
- Specification**
規格: 2, 3, 6, 8
- Cavity**
閥孔型號: T13A, T5A, T16A, T18A
- Controls**
控制方式:
L: 標準螺絲調整 / K: 調鈕調整 / H: 調鈕調整
L: Standard Screw Adjustment / K: Handknob with Lock knob / H: Calibrated Handknob Screw Knob
- Adjustment Ranges**
調整範圍:
FD2A: 0.4~23 L/min, FD3B: 0.4~4.5 L/min, FD6A: 1.0~95 L/min, FD8A: 1.0~200 L/min
- Seals**
油封材質: N: Buna-N, V: Viton

Dimension 外型尺寸

FD2A

Cavities Tooling

浮動型插式2口閥孔尺寸圖



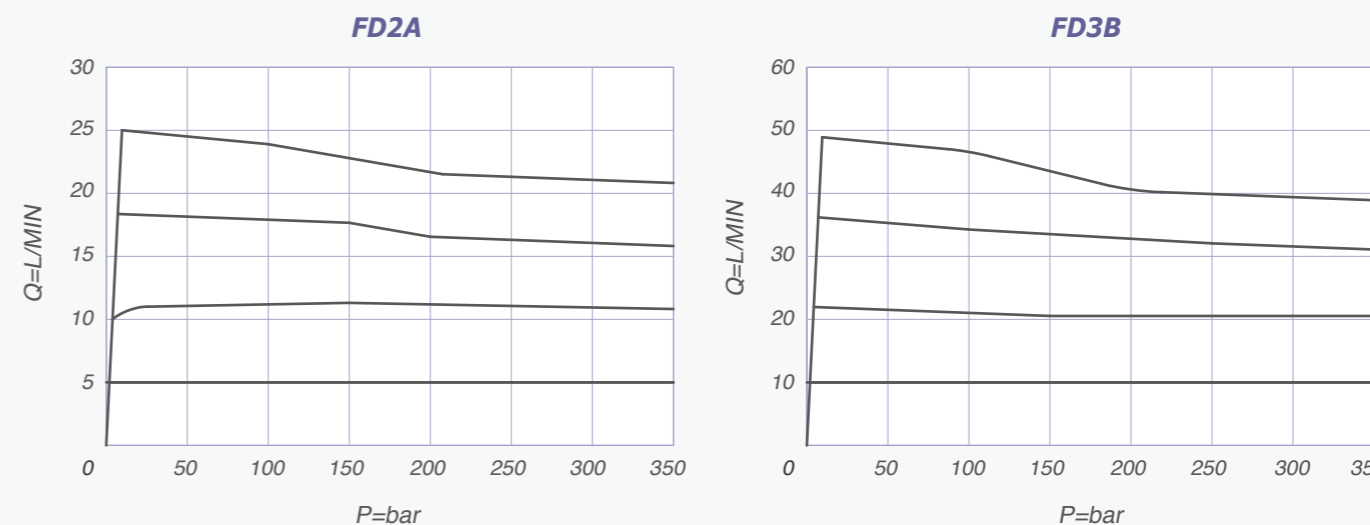
Specifications

技術數據

	Max. pressure 最高壓力	Max. flow 最大流量	Max. flow 安裝扭矩	Operating temperature 溫度範圍	kg 重量
	(bar)	Litres/min	(Nm)		(lbs)
FD2A	350	23 L/min	40/50	-35~100°C (-31~212°F)	0.14 (0.31)
FD3B	350	45 L/min	60/70	-35~100°C (-31~212°F)	0.28 (0.62)

Typical Performance

流量特性

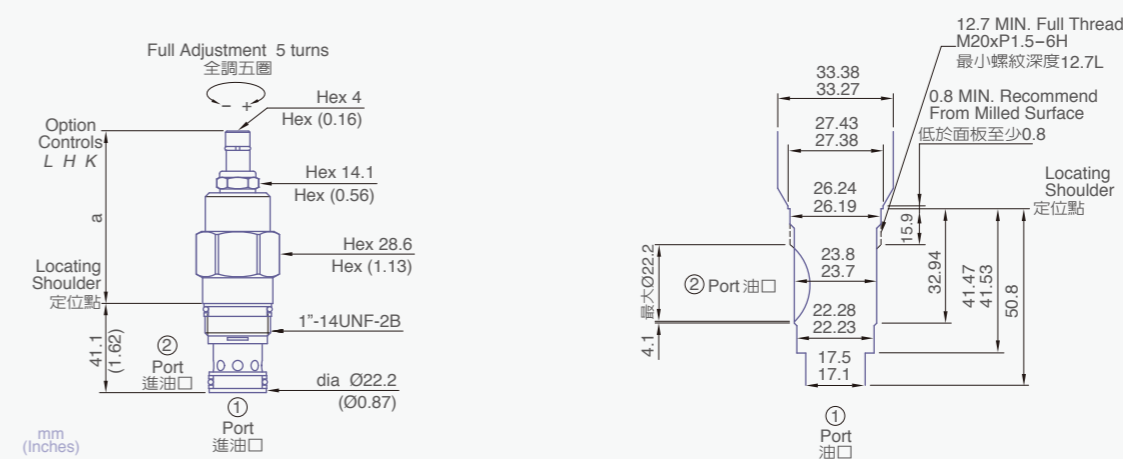


Dimension 外型尺寸

FD3B

Cavities Tooling

浮動型插式2口閥孔尺寸圖



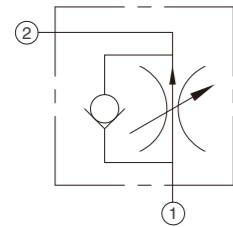
ADJUSTABLE PRESSURE-COMPENSATION FLOW CONTROL
(WITH FREE FLOW CHECK)
浮動型-插式全調型壓力補償調流閥(附單向閥)



FD6A-T16A
FD8A-T18A

Adjustable Pressure - Compensation Control
(With Free Flow Check)

浮動型-插式全調型壓力補償調流閥
(附單向閥)



Model code 產品型號	Cavity 閥孔型號	Capacity 流量	Cartridge Dimensions 外型尺寸		
			L	H	K
FD2A	T13A	23L/min	58	64	64
FD3B	T5A	45L/min	67	72	73
FD6A	T16A	95L/min	73	79	79
FD8A	T18A	200L/min	84	90	90

Ordering Code

型號說明 **FD** **1** **6A** **2** **T16A** **3** **L** **4** **A** **5** **N** **6**

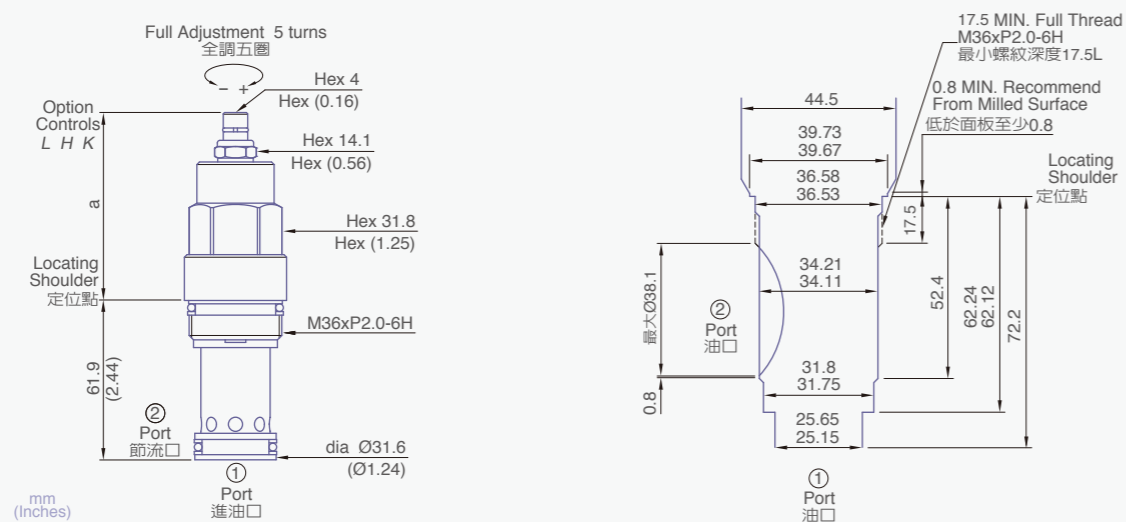
- Model Code**
插式全調型節流閥
- Specification**
規格: 2, 3, 6, 8
- Cavity**
閥孔型號: T13A, T5A, T16A, T18A
- Controls**
控制方式:
L: 標準螺絲調整 / K: 調鈕調整 / H: 調鈕調整
L: Standard Screw Adjustment / K: Handknob with Lock knob / H: Calibrated Handknob Screw Knob
- Adjustment Ranges**
調整範圍: FD2A: 0.4~23 L/min, FD3B: 0.4~4.5 L/min, FD6A: 1.0~95 L/min, FD8A: 1.0~200 L/min
- Seals**
油封材質: N: Buna-N, V: Viton

Dimension 外型尺寸

FD6A

Cavities Tooling

浮動型插式2口閥孔尺寸圖



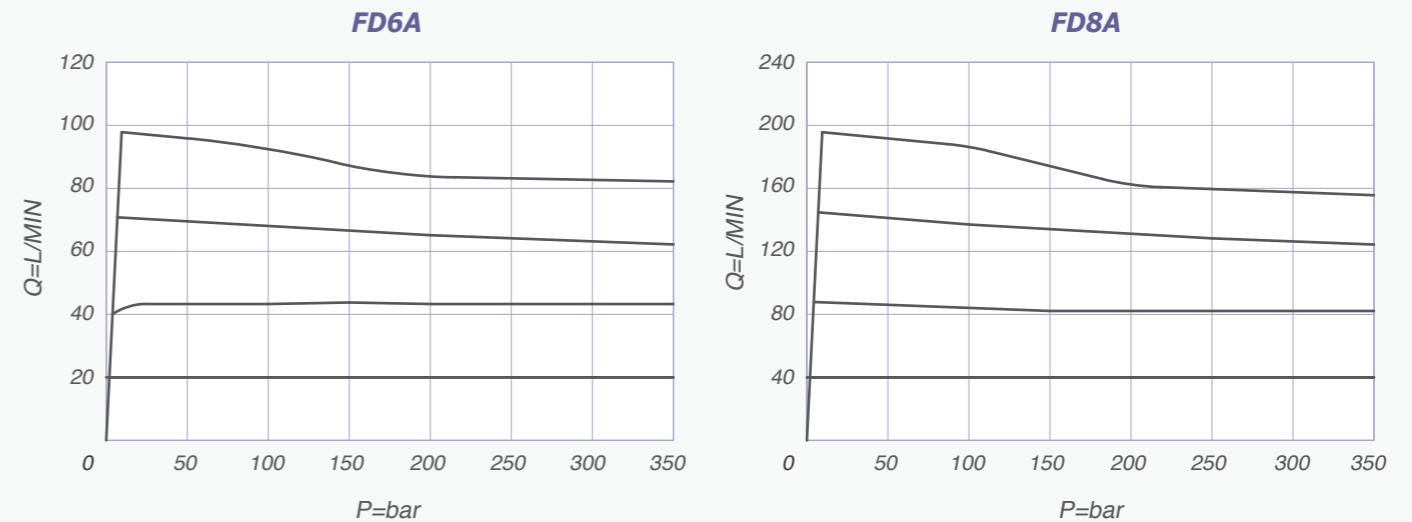
Specifications

技術數據

	Max. pressure 最高壓力	Max. flow 最大流量	Max. flow 安裝扭矩	Operating temperature 溫度範圍	kg 重量
	(bar)	Litres/min	(Nm)		(lbs)
FD6A	350	95 L/min	200/215	-35~100°C (-31~212°F)	0.55 (1.21)
FD8A	350	200 L/min	465/500	-35~100°C (-31~212°F)	1.23 (2.7)

Typical Performance

流量特性



Dimension

外型尺寸

FD8A

Cavities Tooling

浮動型插式2口閥孔尺寸圖

