

COUNTERBALANCE CARTRIDGE

浮動型-插式抗衡閥 (標準型)



CB2H-T11A

CB3H-T2A

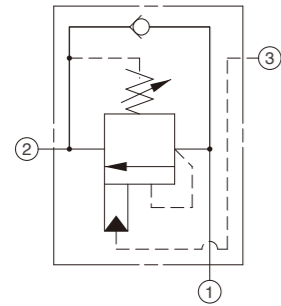
Specifications

技術數據

	Max. pressure 最高壓力 (bar)	Max. flow 最大流量 Litres/min	Max. flow 安裝扭矩 (Nm)	Operating temperature 溫度範圍	kg 重量 (lbs)
CB2H	350	60 L/min	40/50	-35~100°C (-31~212°F)	0.17 (0.37)
CB3H	350	120 L/min	60/70	-35~100°C (-31~212°F)	0.30 (0.66)

Counterbalance Cartridge

浮動型-插式抗衡閥 (標準型)



Model code 產品型號	Cavity 閥孔型號	Capacity 流量	Cartridge Dimensions 外型尺寸
			a
			L
CB2H	T11A	60L/min	50
CB3H	T2A	120L/min	61
CB6H	T17A	240L/min	70
CB8H	T19A	480L/min	90

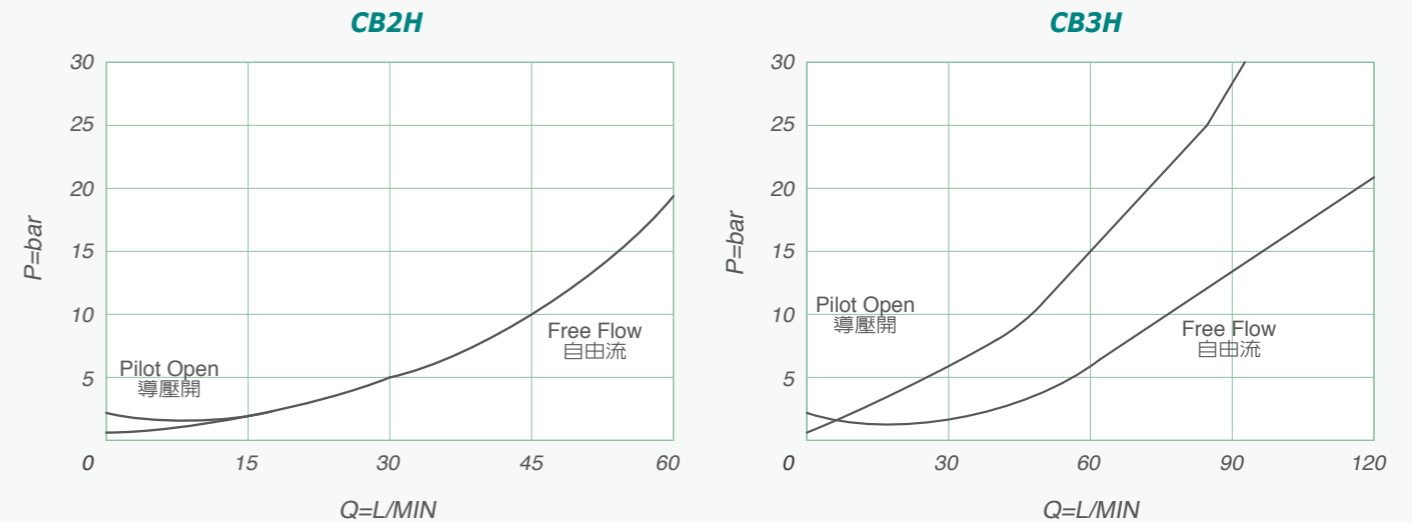
Ordering Code

型號說明 **CB** **1** **2H** **2** **T11A** **3** **L** **4** **J** **5** **N** **6**

- Model Code**
插式抗衡閥
- Specifcation**
規格: 2, 3, 6, 8
- Pilot Ratio**
導壓比: H: 10:1
- Cavity**
閥孔型號: T11A, T2A, T17A, T19A
- Controls**
控制方式: L: 標準螺絲調整
L: Standard Screw Adjustment
- Adjustment Ronges**
調整範圍: J: 140~350bar, K: 70~175bar, C: 140~350bar, D: 70~175bar
止回彈簧壓力: Cracking Pressure J&K: 1.7 bar, C&D: 0.3bar
出場設定壓力: Standard Set J&C: 210 bar, K&D: 140bar
- Seals**
油封材質: N: Buna-N V: Viton

Free Flow or Open Pressure Drop

自由流和導壓開降曲線



Dimension

外型尺寸

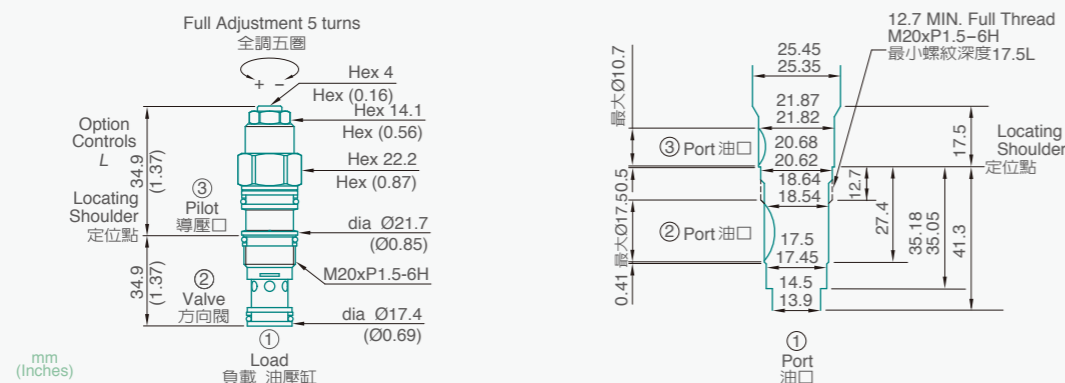
CB2H

Cavities Tooling

浮動型插式3口閥孔尺寸圖

Turn screw clockwise to reduce setting and release load

注意: 順時針方向旋轉-降壓
反時針方向旋轉-增壓



Dimension

外型尺寸

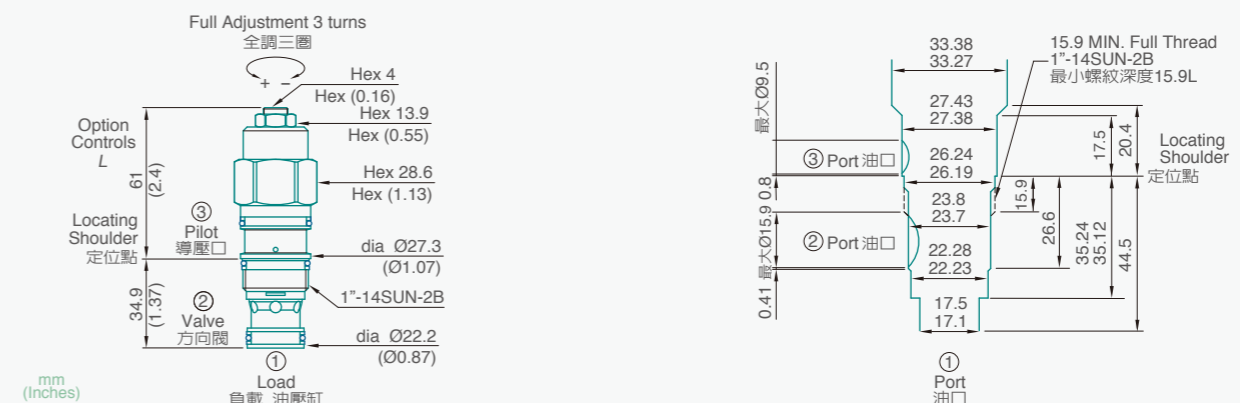
CB3H

Cavities Tooling

浮動型插式3口閥孔尺寸圖

Turn screw clockwise to reduce setting and release load

注意: 順時針方向旋轉-降壓
反時針方向旋轉-增壓



COUNTERBALANCE CARTRIDGE

浮動型-插式抗衡閥 (標準型)



CB6H-T17A
CB8H-T19A

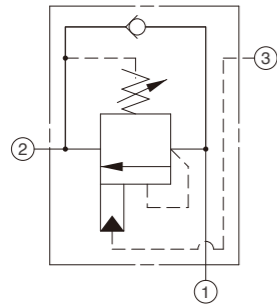
Specifications

技術數據

	Max. pressure 最高壓力 (bar)	Max. flow 最大流量 Litres/min	Max. flow 安裝扭矩 (Nm)	Operating temperature 溫度範圍 -35~100°C (-31~212°F)	kg 重量 (lbs)
CB6H	350	240 L/min	200/215	-35~100°C (-31~212°F)	0.64 (1.41)
CB8H	350	480 L/min	465/500	-35~100°C (-31~212°F)	1.47 (3.23)

Counterbalance Cartridge

浮動型-插式抗衡閥 (標準型)



Model code 產品型號	Cavity 閥孔型號	Capacity 流量	Cartridge Dimensions 外型尺寸
			a
			L
CB2H	T11A	40L/min	50
CB3H	T2A	80L/min	61
CB6H	T17A	160L/min	70
CB8H	T19A	320L/min	90

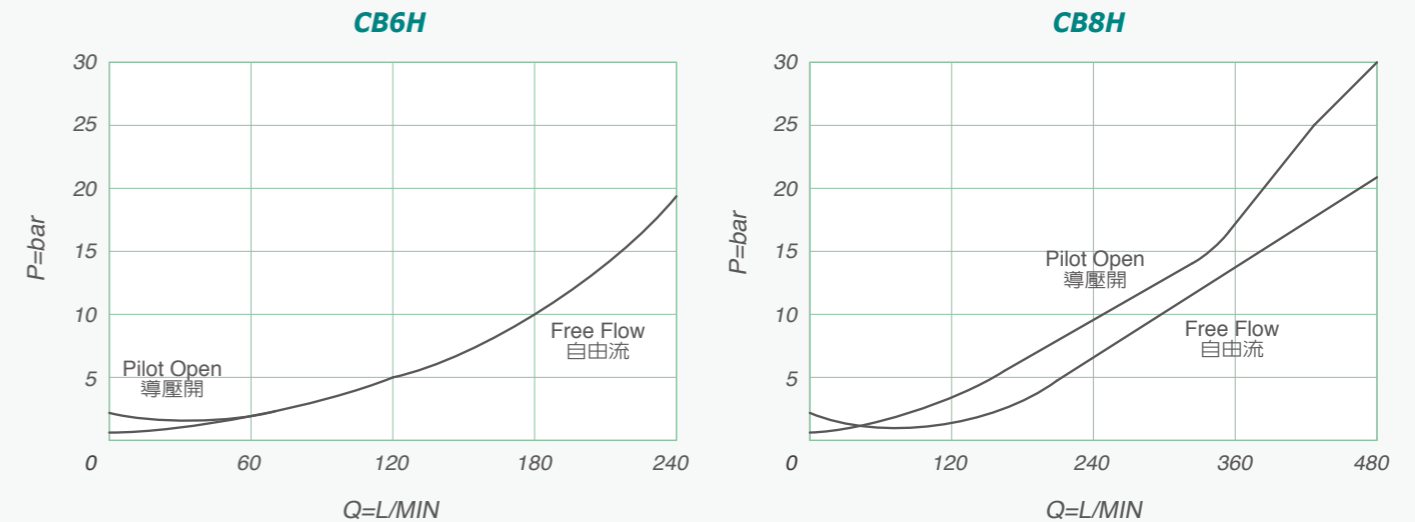
Ordering Code

型號說明 **CB** **1** **6H** **2** **T17A** **3** **L** **4** **J** **5** **N** **6**

- Model Code**
插式抗衡閥
- Specification**
規格: 2, 3, 6, 8
- Pilot Ratio**
導壓比: H:10:1
- Cavity**
閥孔型號: T11A, T2A, T17A, T19A
- Controls**
控制方式: L: 標準螺絲調整
L: Standard Screw Adjustment
- Adjustment Ranges**
調整範圍: J: 140~350bar, K: 70~175bar, C: 140~350bar, D: 70~175bar
止回彈簧壓力: Cracking Pressure J&K: 1.7 bar, C&D: 0.3bar
出場設定壓力: Standard Set J&C: 210 bar, K&D: 140bar
- Seals**
油封材質: N: Buna-N V: Viton

Free Flow or Open Pressure Drop

自由流和導壓開降曲線



Dimension

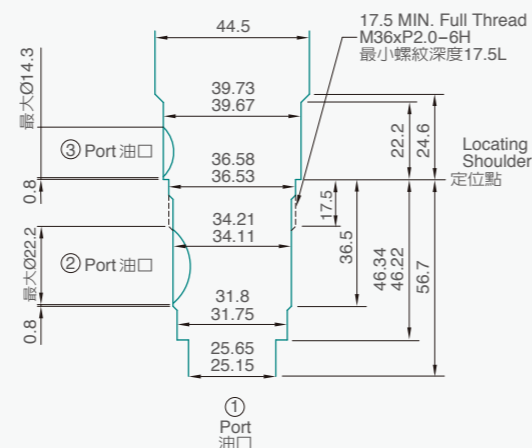
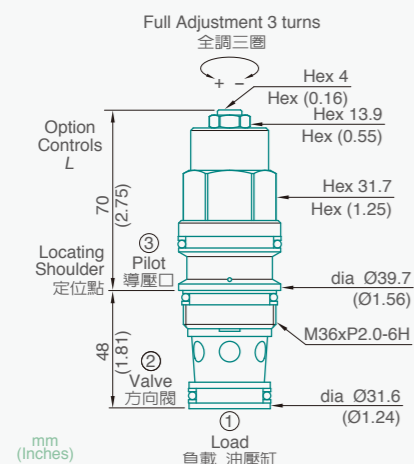
外型尺寸

CB6H

Cavities Tooling

浮動型插式3口閥孔尺寸圖

Turn screw clockwise to reduce setting and release load
注意: 旋轉方向: 順時針-降壓, 反時針-增壓



Dimension

外型尺寸

CB8H

Cavities Tooling

浮動型插式3口閥孔尺寸圖

Turn screw clockwise to reduce setting and release load
注意: 旋轉方向: 順時針-降壓, 反時針-增壓

